

Datasheet: KHF2G4704 Post-Mix Pump Motor

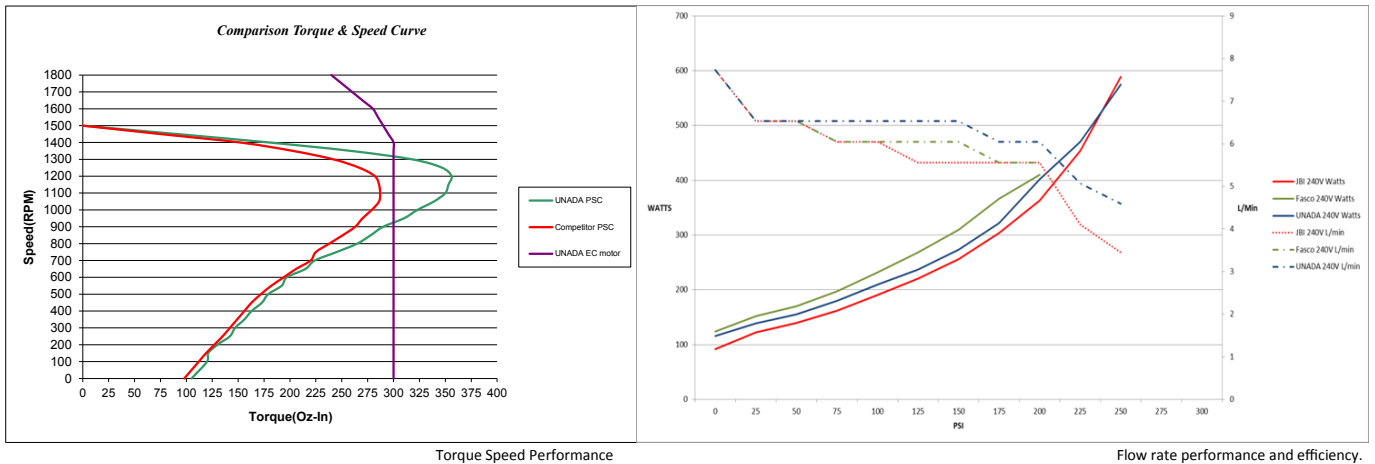


Distributed by Bracton Beverage Dispense - www.bracton.com

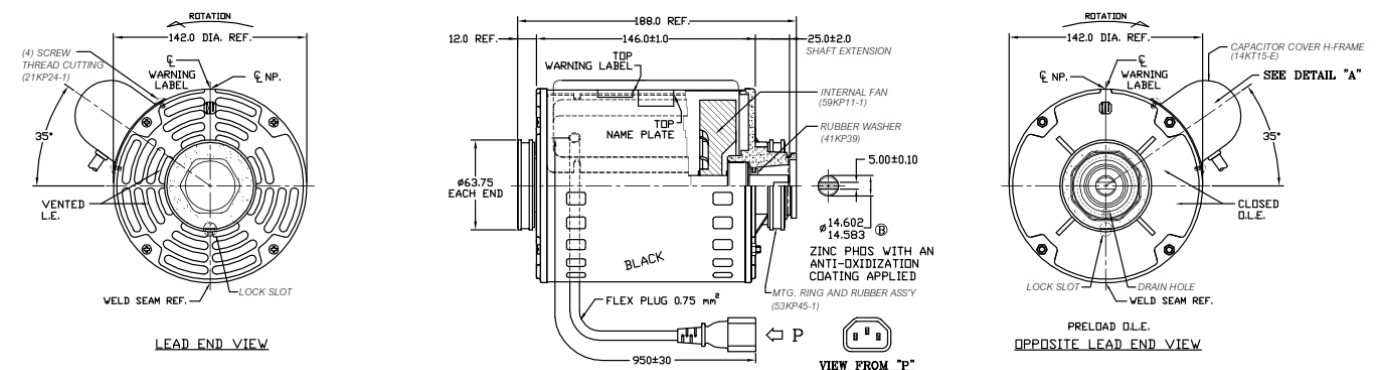


ITEM	SPECIFICATION
Rated voltage	230Vac (+/-10%), 50Hz
Temperature range	-30°C to +50°C
Rated current	1.55A
Output Power	250W (1/3hp)
Rated speed	1380rpm
Speed Selection	10µF
Direction of rotation	CCW
Motor Protection	Thermally Protected,
Ground Protection	Double Insulation
Insulation Class	Class B
Bearing	6203 VVC3ER sealed roller bearings
Approvals	TÜV / CE / C Tick (in progress)
Ingress Protection	IP54
Case Materials	Cold rolled steel shell / ADC12 End shields

Performance:



Drawing:



UNADA	
THERMALLY PROTECTED	
KHF2G4704	SER.XXCXXXXX
240V 50Hz	1.55A 1/3HP
CAP. 10µF 440VAC	1380RPM
128 BARCODE FORMAT	
← ROTATION ←←←	
MOTOR	WIRING
MAIN-BLACK	LINE
COMMON-WHITE	N
CAP-WHITE	+
AUX-BROWN	-
GND-GN/YL	CAPACITOR
MADE IN THAILAND	

REF:KHF2G4703_A0